

PINTLE HOOKS



- Combination Ball /Hook
- Rigid Mount
- Swivel Mount
- NoLube™
- Air Cushioned



Pintle Hooks – Rigid Mount

BH-200RN41 Features 2" diameter ball
BH-50mmRN41 Features 50mm diameter ball

U.S. and other patents apply

Application

A rigid mount pintle hook that combines a pintle hook and ball hitch. Designed for customers who need the strength and capacity to pull trailers equipped with drawbars, as well as the flexibility to pull trailers with a 2" or 50mm ball hitch.



One-hand operation and automatic secondary lock

Our unique design is:

- Stronger and more durable than removable ball designs.
- Shape eliminates premature wear typically caused by the drawbar pulling against the ball.
- Provides better oscillation and articulation in off-road conditions than a removable ball design.



Forged from a special steel alloy that is heat treated for strength, and durability.



Available with a tethered lock pin as BH-200RN51 or BH-50mmRN51

Weight: 10 lbs. (4.5 kg)



Capacities

Pintle Hook:

20,000 lbs. (9,070 kg) Maximum Gross Trailer Weight
 4,000 lbs. (1,810 kg) Maximum Vertical Load

2" Ball / 50mm Ball:

10,000 lbs. (4,540 kg) Maximum Gross Trailer Weight
 1,000 lbs. (454 kg) Maximum Vertical Load

Drawbar Eye Dimensions

2.38" to 3" I.D. with 1.25" to 1.63" diameter section.

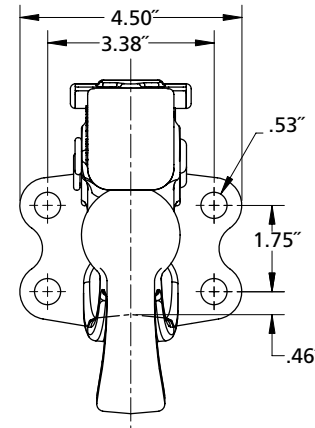
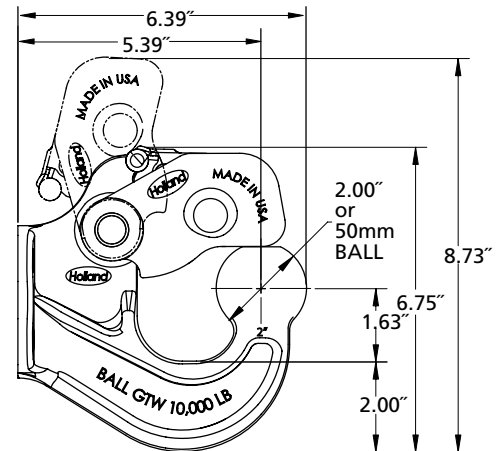
Additional Information

- For off-road* applications, reduce the above maximum capacities by 25% and use with a swivel-mount drawbar.
- Tested in accordance with SAE J847.
- For additional specification detail, refer to document numbers:

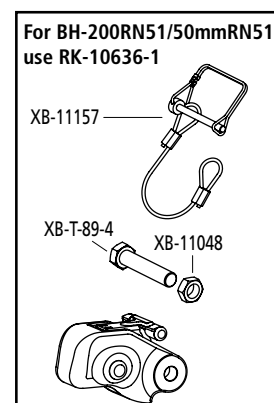
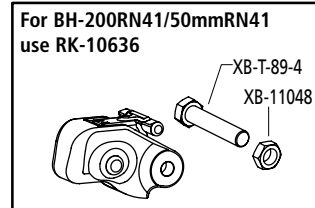
XL-PH377 for BH-200RN41
 XL-PH385 for BH-200RN51
 XL-PH379 for BH-50mmRN41
 XL-PH384 for BH-50mmRN51

* See definition on page 71

Mounting Dimensions



Replacement Parts

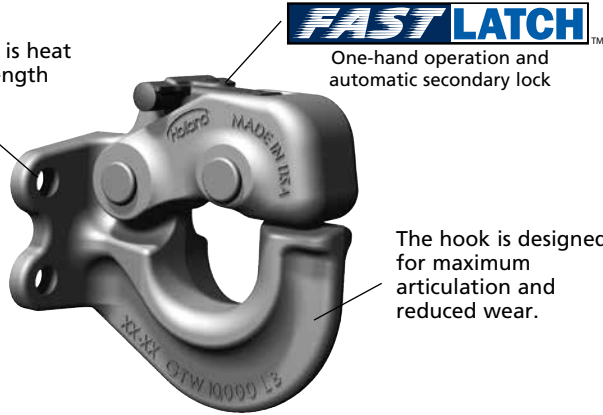


PH-10RP41

Application

A rigid mount pintle hook designed for over-the-road and off-road towing.

Cast steel body is heat treated for strength and durability.



FAST LATCH™

One-hand operation and automatic secondary lock

The hook is designed for maximum articulation and reduced wear.



Available with a tethered lock pin as PH-10RP51

Weight: 7.5 lbs. (3.4 kg)

Capacities

10,000 lbs. (4,540 kg) Maximum Gross Trailer Weight
2,000 lbs. (910 kg) Maximum Vertical Load

Drawbar Eye Dimensions

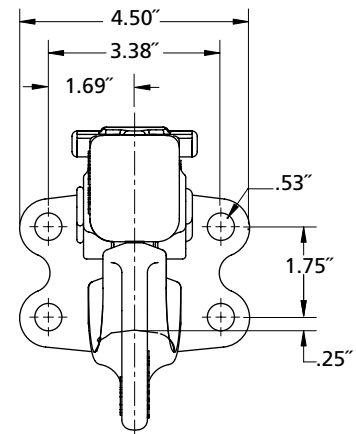
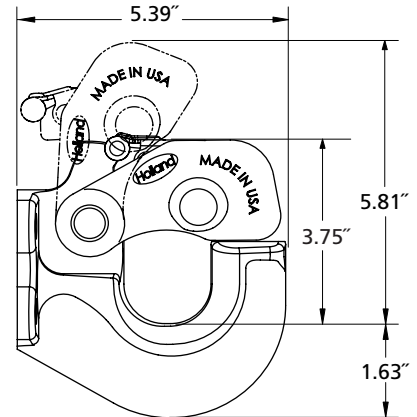
2" to 3" I.D. with 1.25" to 1.63" diameter section.

Additional Information

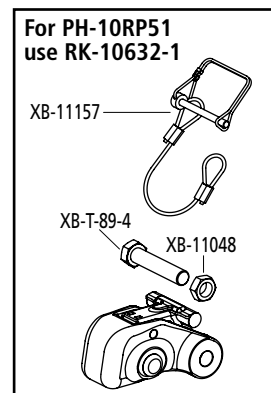
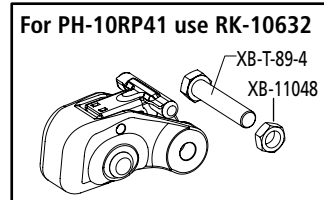
- For off-road* applications, reduce the above maximum capacities by 25% and use with a swivel-mount drawbar.
- Tested in accordance with SAE J847.
- For additional specification detail, refer to document number XL-PH350. For PH-10RP51, refer to XL-PH387.

* See definition on page 71

Mounting Dimensions



Replacement Parts



PH-T-60-AOL-8

Application

A rigid mount pintle hook designed for over-the-road and off-road towing within stated capacities.

Forged from a special steel alloy that is heat treated for strength and durability.

The latch is cast steel alloy and heat treated for strength and long life.



Weight: 11 lbs. (5 kg)

Capacities

30,000 lbs. (13,610 kg) Maximum Gross Trailer Weight
6,000 lbs. (2,720 kg) Maximum Vertical Load

Drawbar Eye Dimensions

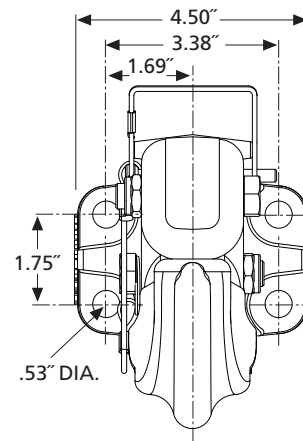
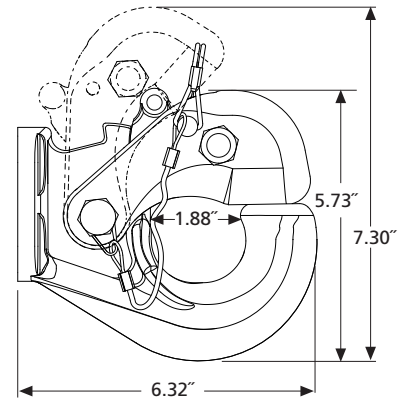
2" to 3" I.D. with 1.25" to 1.63" diameter section.

Additional Information

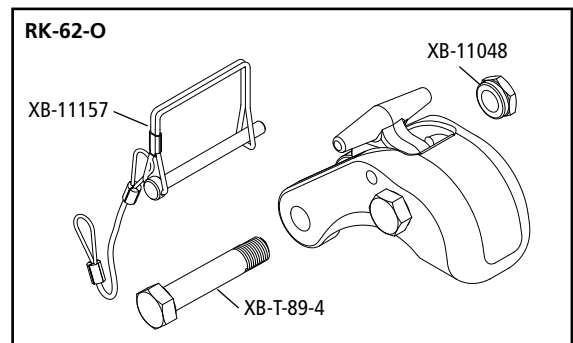
- For off-road* applications, reduce the above maximum capacities by 25% and use with a swivel-mount drawbar.
- Tested in accordance with SAE J847.
- For additional specification detail, refer to document number XL-PH20031UM

* See definition on page 71

Mounting Dimensions



Replacement Parts



PH-30RP41

Application

A versatile rigid mount pintle hook designed for over-the-road and off-road towing.



One-hand operation and automatic secondary lock



The hook is designed for maximum articulation and reduced wear.



Available with a tethered lock pin as PH-30RP51

Forged from a special steel alloy that is heat treated for strength and durability.

Weight: 8.4 lbs. (4.2 kg)

Capacities

30,000 lbs. (13,610 kg) Maximum Gross Trailer Weight
6,000 lbs. (2,720 kg) Maximum Vertical Load

Drawbar Eye Dimensions

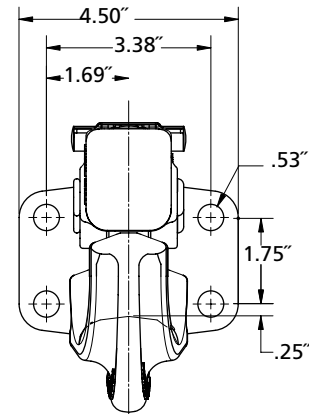
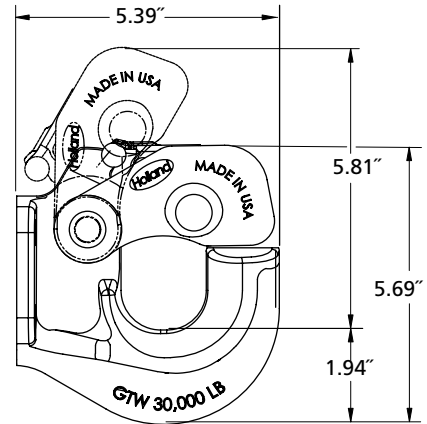
2.38" to 3" I.D. with 1.25" to 1.63" diameter section.

Additional Information

- For off-road* applications, reduce the above maximum capacities by 25% and use with a swivel-mount drawbar.
- Tested in accordance with SAE J847.
- For additional specification detail, refer to document number XL-PH351. For PH-30RP51 refer to XL-PH364.

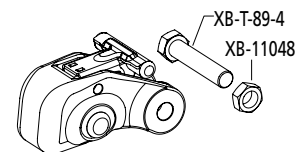
* See definition on page 71

Mounting Dimensions

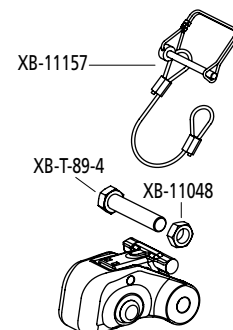


Replacement Parts

For PH-30RP41 use RK-10632



For PH-30RP51 use RK-10632-1



PH-30SA41

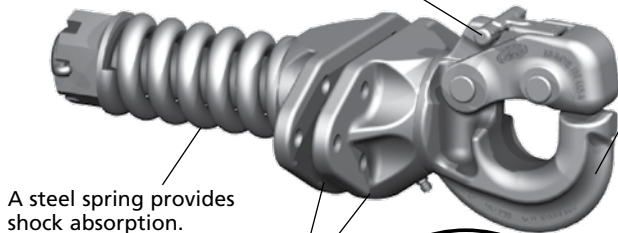
Application

A split flange mount, swivel style pintle hook designed for over-the-road and off-road applications. The spring provides shock absorption at the coupling—ideal for utility and construction applications.



One-hand operation and automatic secondary lock

Forged from a special steel alloy that is heat treated for strength and durability.



A steel spring provides shock absorption.

Cast ductile iron mounting flanges for max. 5/8" plate.



Available with a tethered lock pin as PH-30SA51.

Weight: 32 lbs. (14.5kg)

Capacities

30,000 lbs. (13,610 kg) Maximum Gross Trailer Weight
6,000 lbs. (2,720 kg) Maximum Vertical Load

Drawbar Eye Dimensions

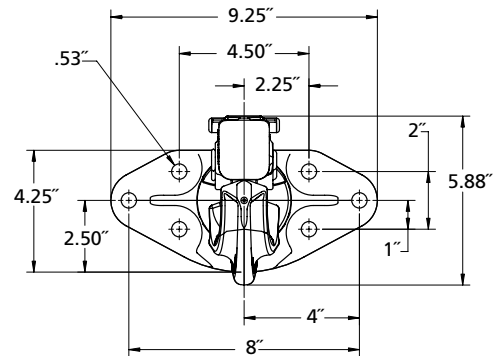
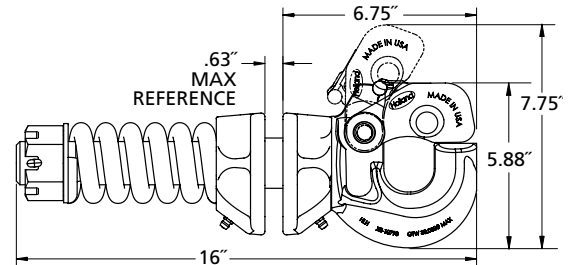
2.38" to 3" I.D. with 1.25" to 1.63" diameter section.

Additional Information

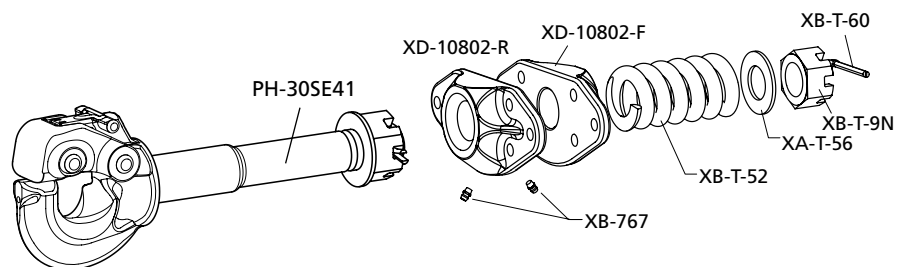
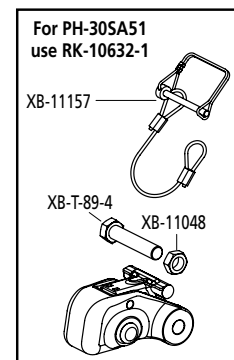
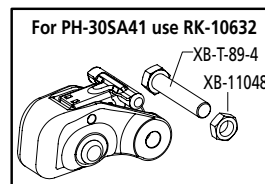
- For off-road* applications, reduce the above maximum capacities by 25%. Not for use with a swivel-mount drawbar.
- Tested in accordance with SAE J847.
- For additional specification detail, refer to document number XL-PH368. For PH-30SA51 refer to XL-PH369.

* See definition on page 71

Mounting Dimensions



Replacement Parts



Available with a tethered lock pin as PH-30SE51.



SAF-HOLLAND Group

Pintle Hooks – Swivel Mount (with Spring Shock Absorption)

PH-30SB41

U.S. and other patents apply

Application

An under-mount, swivel style pintle hook designed for over-the-road and off-road applications. The spring provides shock absorption at the coupling—ideal for utility and construction applications.



One-hand operation and automatic secondary lock

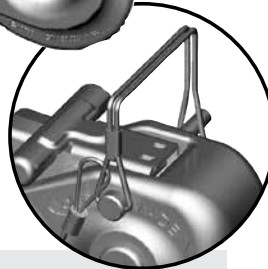
Fully machined, high-strength, cast ductile iron housing with a zerk fitting for easy lubrication.

Steel spring provides shock absorption.

Integrated mount for cross-bracing.

Weight: 38 lbs. (17.2 kg)

Available with a tethered lock pin as PH-30SB51



Capacities

30,000 lbs. (13,610 kg) Maximum Gross Trailer Weight
6,000 lbs. (2,720 kg) Maximum Vertical Load

Drawbar Eye Dimensions

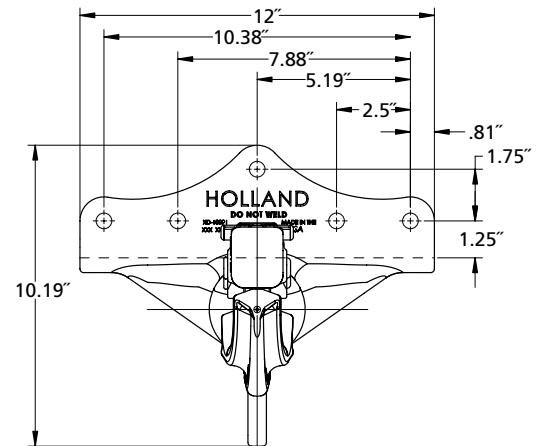
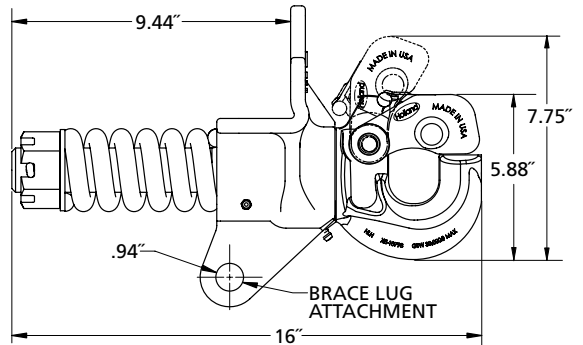
2.38" to 3" I.D. with 1.25" to 1.63" diameter section.

Additional Information

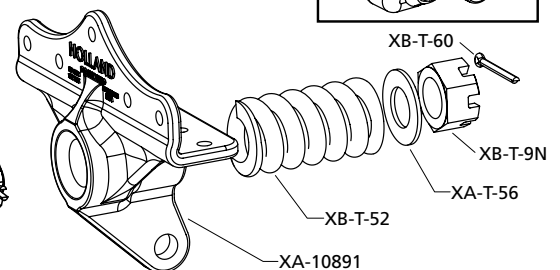
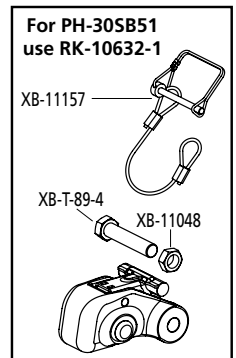
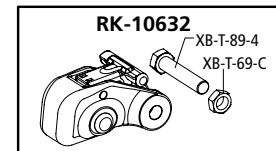
- For off-road* applications, reduce the above maximum capacities by 25%. Not for use with a swivel-mount drawbar.
- Tested in accordance with SAE J847.
- For additional specification detail, refer to document number XL-PH365. For PH-30SB51 refer to XL-PH371.

* See definition on page 71

Mounting Dimensions



Replacement Parts



Available with a tethered lock pin as PH-30SE51.

PH-T-60-AOS-L-8

Application

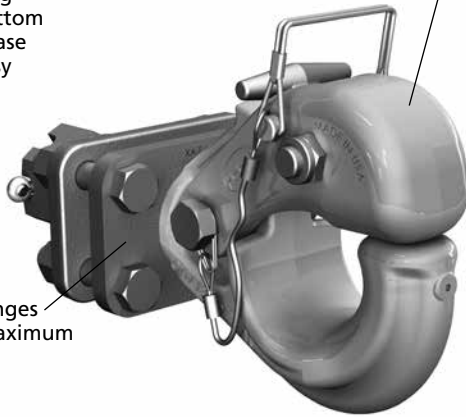
A split flange mounted, swivel style pintle hook designed for over-the-road and off-road applications.

The body is forged from special alloy steel that is heat treated for strength and durability. The special pintle shape is designed for maximum articulation and reduced wear.

Swivel housing includes a bottom mounted grease fitting for easy lubrication.

Latch is cast steel alloy and heat treated for strength and long life.

Mounting flanges allow for a maximum 11/16" plate.



Weight: 15 lbs. (6.8 kg)

Capacities

18,000 lbs. (8,160 kg) Maximum Gross Trailer Weight
 3,600 lbs. (1,630 kg) Maximum Vertical Load

Drawbar Eye Dimensions

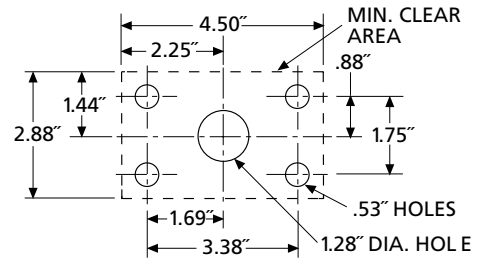
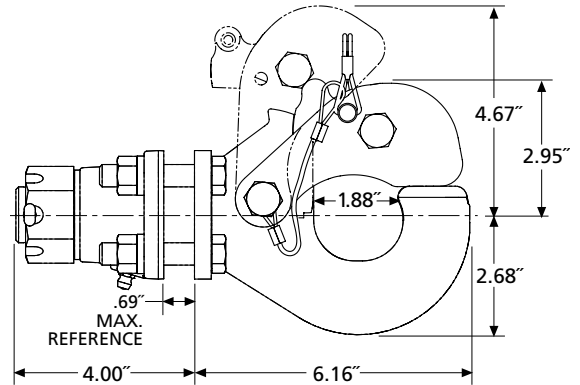
2" to 3" I.D. with 1.25" to 1.63" diameter section.

Additional Information

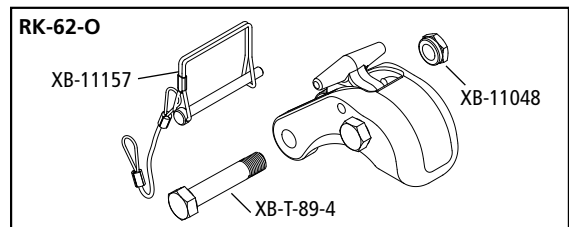
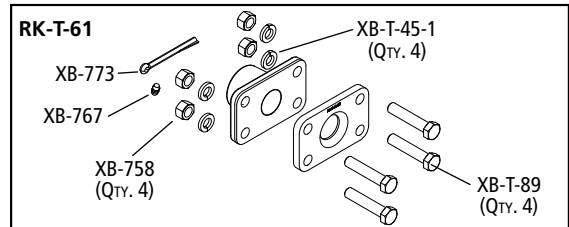
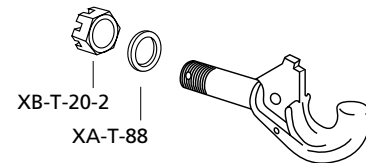
- For off-road* applications, reduce the above maximum capacities by 25%. Not for use with a swivel-mount drawbar.
- Tested in accordance with SAE J847.
- For additional specification detail, refer to document number XL-PH208.

* See definition on page 71

Mounting Dimensions



Replacement Parts



HOLLAND Swivel-Mount Pintle Hooks Featuring SAF-HOLLAND NoLube™ Technology

FEATURES

NoLube™ Swivel Housing

- Self-lubricating, non-metallic bearings, located in the housing, never require lubrication.
- Shaft seals, located in the housing, protect the inside of the housing from water, dirt, and debris.

FastLatch™

- One-hand operation plus automatic primary and secondary lock eliminates need for separate cotter pin or lock pin.

Corrosion Resistance

- Our proprietary NoLube™ coating process provides superior corrosion and abrasion resistance.
- All primary components, housing, hook body/shaft, and latch are coated inside and out prior to final assembly.

Proven Reliability

- HOLLAND NoLube™ Pintle Hooks are in use by the U.S. Military

PH-775SL Heavy-Duty

100,000 lbs. (45,360 kg) Maximum Gross Trailer Weight
20,000 lbs. (9,070 kg) Maximum Vertical Load

Direct replacement for lubricated installations, including BUYERS BP880 / HOLLAND PH-775-01522 / WALLACE B-30



PH-760SL Medium-Duty

60,000 lbs. (27,216 kg) Maximum Gross Trailer Weight
12,000 lbs. (5,443 kg) Maximum Vertical Load

Direct replacement for lubricated installations, including BUYERS BP760A / HOLLAND PH-760 / WALLACE B-30



PH-775SL

Heavy Expanded Mobility Tactical Truck (HEMTT A4)



PH-760SL

M1070 A1 Tractor – Heavy Equipment Transporter (HET)

Pintle Hooks – Swivel Mount

PH-760 (Lubricated)

Application

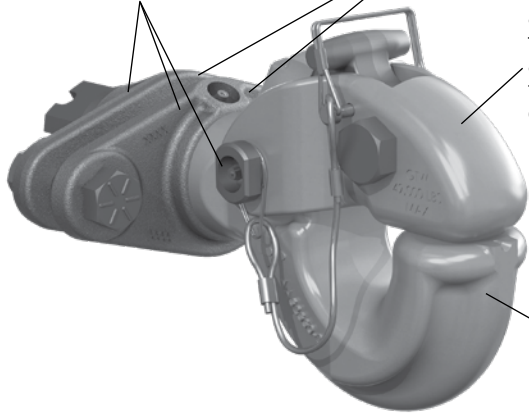
Heavy-duty construction for on- and off-road applications where a significant amount of articulation is required.

To ensure long life, the front and rear flanges and pivot bolt include zerk fittings for easy lubrication.

Mounting flanges allow for a maximum 3/4" plate.

The forged steel alloy body and the cast steel latch are heat treated for strength and durability.

The hook is designed for maximum articulation.



Weight: 36 lbs. (16.3 kg)

Capacities

49,000 lbs. (22,230 kg) Maximum Gross Trailer Weight
9,800 lbs. (4,440 kg) Maximum Vertical Load

Drawbar Eye Dimensions

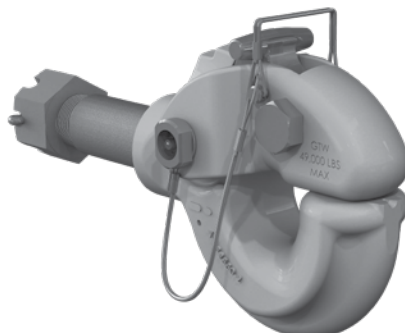
3" I.D. with 1.25" to 1.63" diameter section.

Additional Information

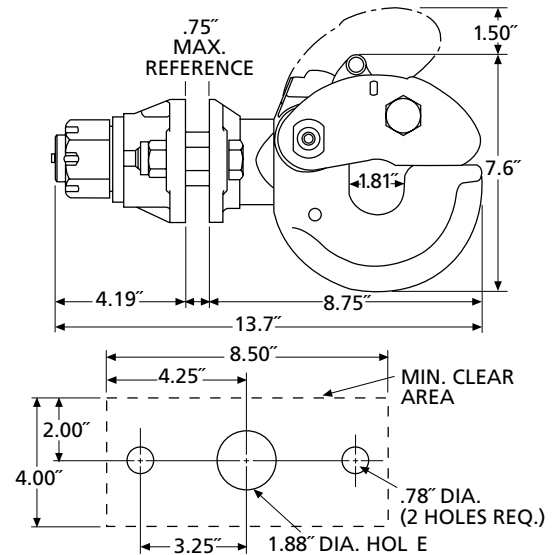
- For off-road* applications, reduce the above maximum capacities by 25%. Not for use with a swivel-mount drawbar.
- Tested in accordance with SAE J847.
- For additional specification detail, refer to document number XL-PH215.

* See definition on page 71

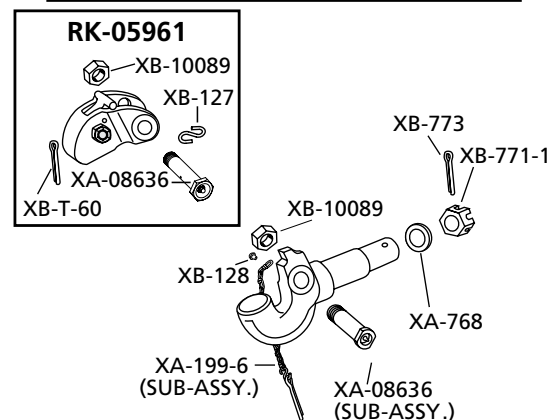
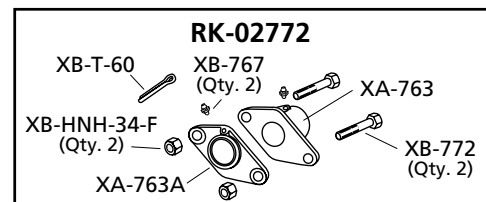
PH-760-1 (Lubricated)



Mounting Dimensions



Replacement Parts





SAF-HOLLAND Group

Pintle Hooks – Swivel Mount

PH-760SL11 (NoLube™)

U.S. and other patents apply

Application

Heavy-duty construction for on- and off-road applications where a significant amount of articulation is required.

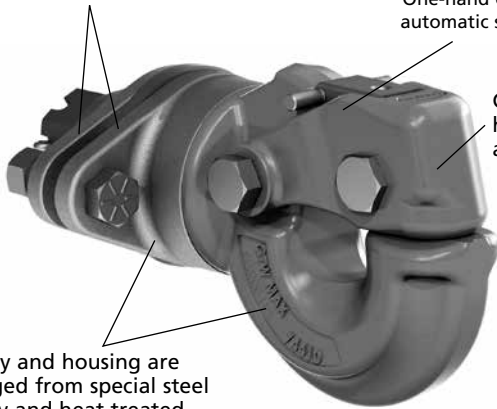
Mounting flanges allow for a maximum 3/4" plate.



One-hand operation and automatic secondary lock

Cast steel alloy latch is heat treated for strength and durability.

Body and housing are forged from special steel alloy and heat treated for high strength and wear resistance.



Available with a tethered lock pin as PH-760SL21.



No lubrication required.

Weight: 36 lbs. (16.3 kg)

Capacities

60,000 lbs. (27,216 kg) Maximum Gross Trailer Weight
12,000 lbs. (5,443 kg) Maximum Vertical Load

Drawbar Eye Dimensions

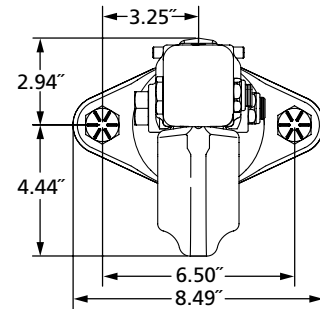
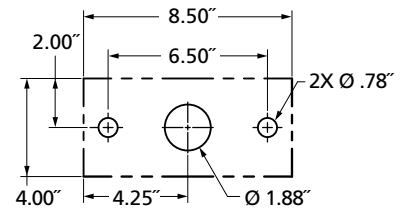
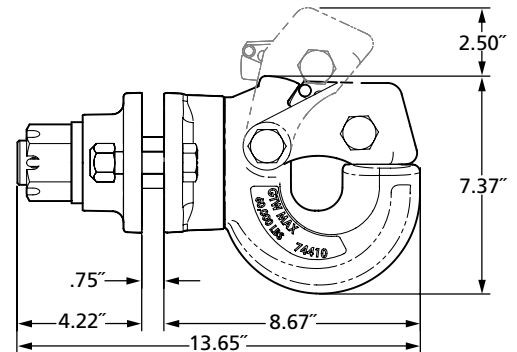
3" I.D. with 1.25" to 1.63" diameter section.

Additional Information

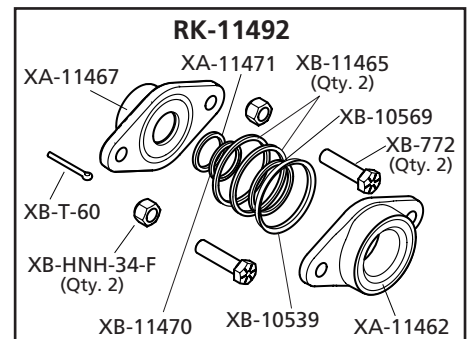
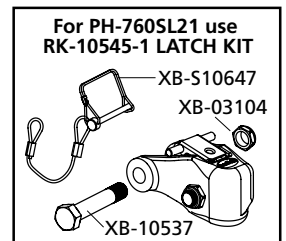
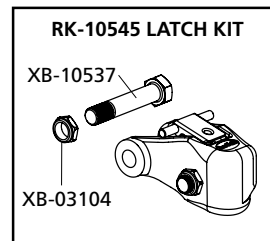
- For off-road* applications, reduce the above maximum capacities by 25%. Not for use with a swivel-mount drawbar.
- Tested in accordance with SAE J847.
- For additional specification detail, refer to document number XL-PH10405UM.

* See definition on page 71

Mounting Dimensions



Replacement Parts

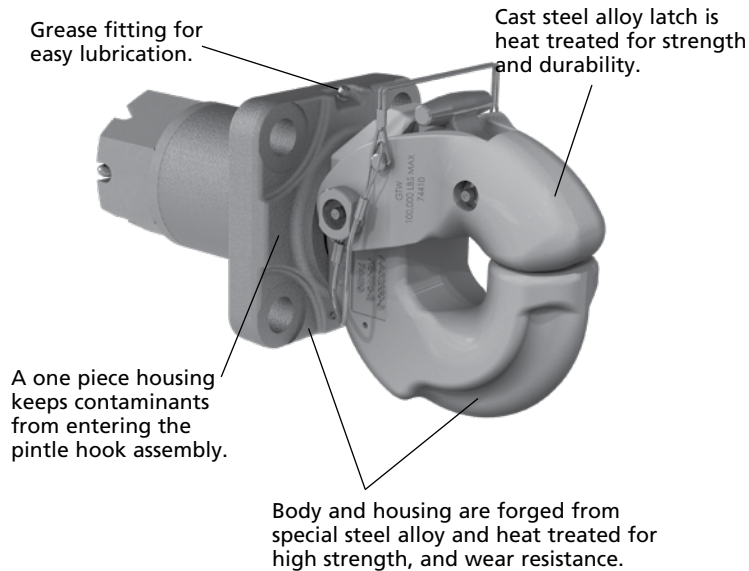


Pintle Hooks – Swivel Mount

PH-775-01552 (Lubricated)

Application

Heavy-duty construction for on- and off-road applications where a significant amount of articulation is required.



Weight: 60 lbs. (27.2 kg)

Capacities

100,000 lbs. (45,360 kg) Maximum Gross Trailer Weight
 20,000 lbs. (9,070 kg) Maximum Vertical Load

Drawbar Eye Dimensions

3" I.D. with 1.63" diameter section.

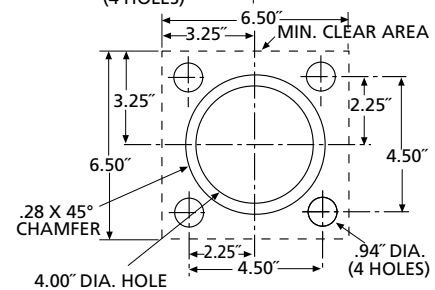
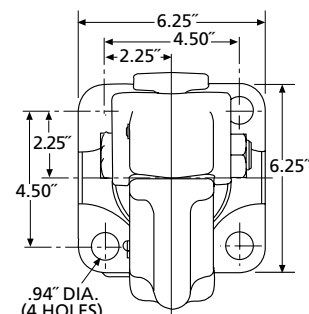
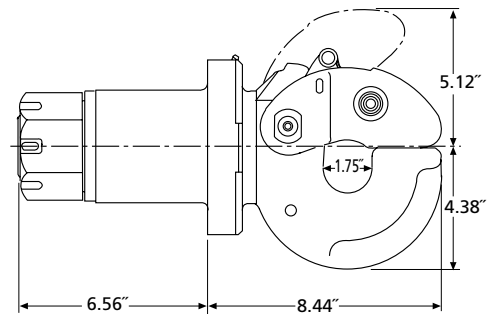
Additional Information

- For off-road* applications, reduce the above maximum capacities by 25%. Not for use with a swivel-mount drawbar.
- Tested in accordance with SAE J847.
- For additional specification detail, refer to document number XL-PH246.

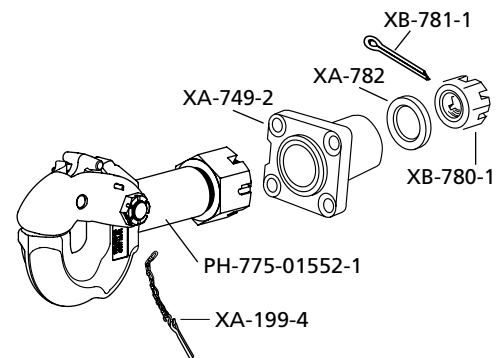
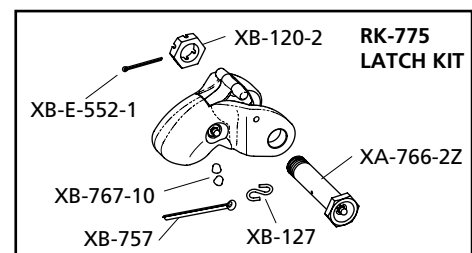
* See definition on page 71

The HOLLAND PH-775-01552 complies with NOM-035-SCT-2-2010 Safety Specifications and Test Methods.

Mounting Dimensions



Replacement Parts





SAF-HOLLAND Group

Pintle Hooks – Swivel Mount

PH-775SL11 (NoLube™)

U.S. and other patents apply

Application

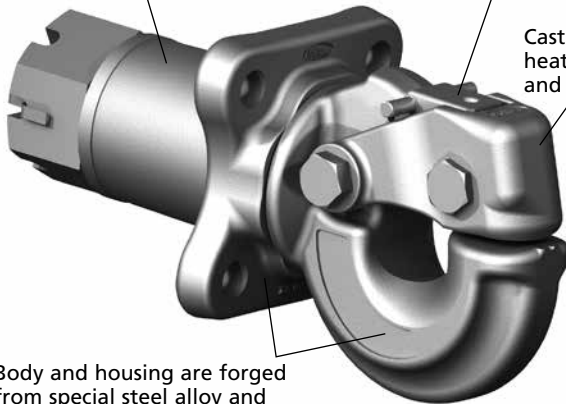
Heavy-duty construction for on- and off-road applications where a significant amount of articulation is required.

A one-piece sealed housing keeps contaminants from entering the pintle hook assembly.

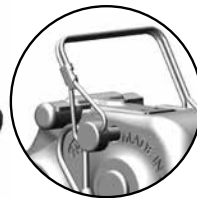


One-hand operation and automatic secondary lock

Cast steel alloy latch is heat treated for strength and durability.



Body and housing are forged from special steel alloy and heat treated for high strength and wear resistance.



Available with a tethered lock pin as PH-775SL21.



No lubrication required.

Weight: 57 lbs. (25.8 kg)

Capacities

100,000 lbs. (45,360 kg) Maximum Gross Trailer Weight
20,000 lbs. (9,070 kg) Maximum Vertical Load

Drawbar Eye Dimensions

3" I.D. with a 1.63" diameter section.

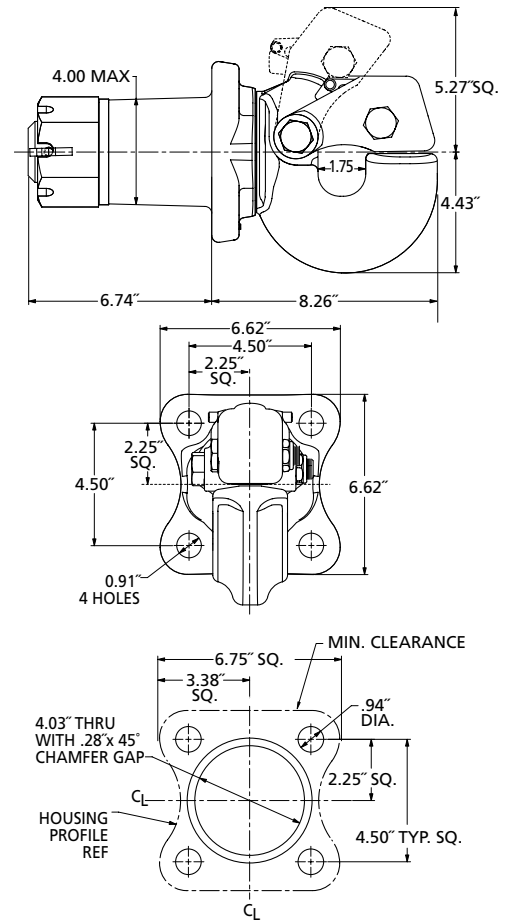
Additional Information

- For off-road* applications, reduce the above maximum capacities by 25%. Not for use with a swivel-mount drawbar.
- Tested in accordance with SAE J847.
- For additional specification detail, refer to document number XL-PH334. For PH-775SL21 refer to XL-PH339.

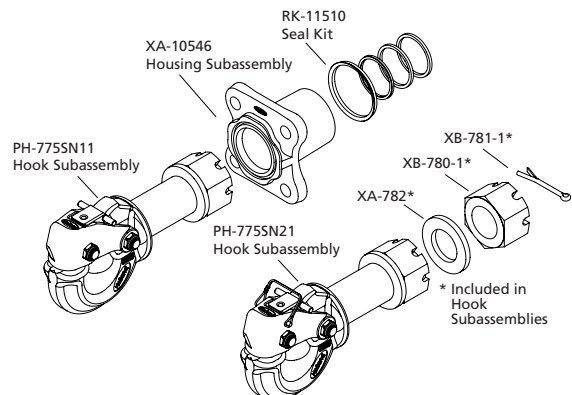
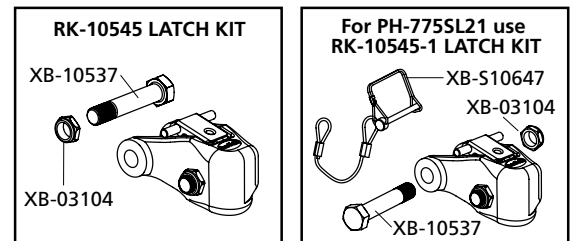
* See definition on page 71

The HOLLAND PH-775SL21 NoLube™ complies with NOM-035-SCT-2-2010 Safety Specifications and Test Methods.

Mounting Dimensions



Replacement Parts



Pintle Hooks – Rigid Mount – Air Cushioned

U.S. and other patents apply

PH-210

Application

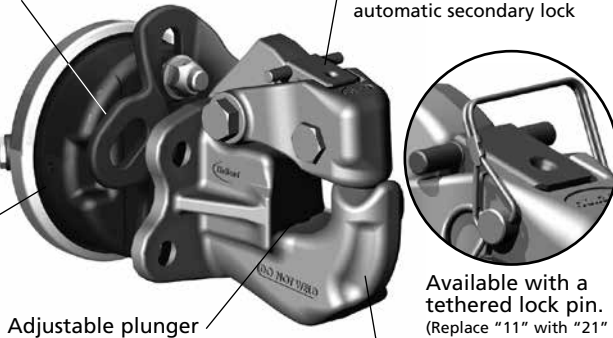
A rigid mount pintle hook designed for trailers and semitrailers in doubles and triples operations. Used for off- and over-the-road applications. Air cushioned snubber is designed to minimize the gap between the pintle hook and the drawbar eye on vehicles with air systems.

Plunger/snubber force is developed by the vehicle's air system to reduce wear and to provide shock absorption.

FAST LATCH™

One-hand operation and automatic secondary lock

Air chambers are available for different mounting widths; see page 26.



Cast steel alloy body is heat treated for increased strength and durability.

Weight: 38 lbs. (17.2 kg)

PH-210RA11 – Complete assembly includes a pintle hook, plunger, air chamber, and mounting bracket.

PH-210RN11 – Pintle hook without an air chamber, bracket or plunger.

PH-210RM11 – Pintle hook with plunger only.

PH-210RF11 – Pintle hook with plunger and air chamber with 12" cut-to-length rod.

For additional model numbers, see page 30.

The PH-210 can be operated with or without the air chamber.

For easier coupling, drawbar guides are available, see page 62.

Capacities

90,000 lbs. (40,824 kg) Maximum Gross Trailer Weight
18,000 lbs. (8,165 kg) Maximum Vertical Load

Drawbar Eye Dimensions

2.38" to 3" I.D. with 1.25" to 1.63" diameter section.

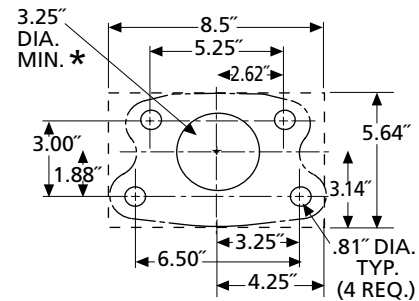
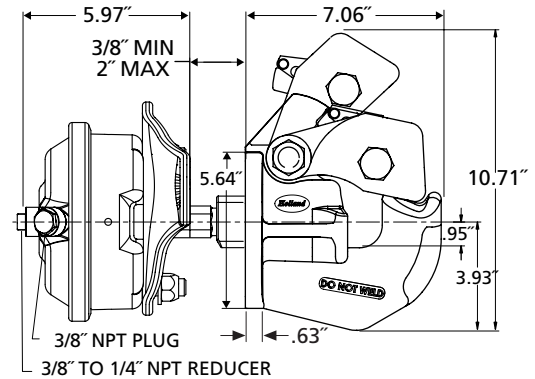
Additional Information

- For off-road* applications, reduce the above maximum capacities by 25% and use with a swivel-mount drawbar.
- Tested in accordance with SAE J847.
- For additional specification detail, refer to document number XL-PH340.
- Also available – PH210 Series with tethered lock pin. Replace "11" with "21" in model number.

* See definition on page 71

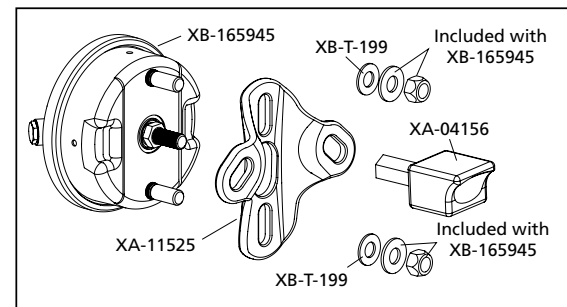
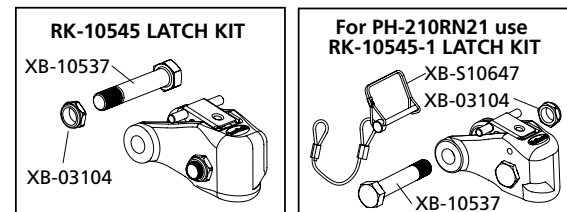
The HOLLAND PH-210 complies with NOM-035-SCT-2-2010 Safety Specifications and Test Methods.

Mounting Dimensions



* Center hole not required if used without air chamber.

Replacement Parts



XA-02608 Cylinder and Bracket Sub-Assembly

PH-300 and PH-300-R

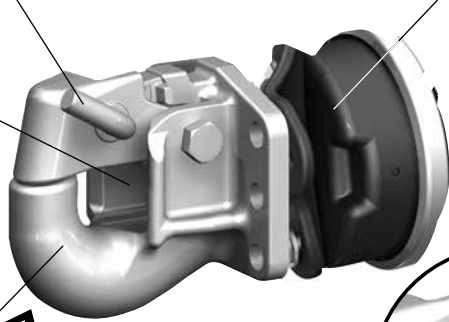
Application

A rigid mount pintle hook designed for enhanced wear resistance. Used for on- and off-road applications.

Unique one-hand latch operation. Also available with reversed latch handle, PH-300-R (see inset).

Plunger/snubber force is developed by the vehicle's air system to reduce wear and to provide shock absorption.

Adjustable plunger



Austenitic Manganese steel alloy body for enhanced wear resistance.

PH-300-R (reverse latch)



Weight: 42 lbs. (19 kg)

The complete assembly includes a pintle hook, plunger, air chamber, and mounting bracket. For pintle hooks without an air chamber, bracket, or plunger, order PH-300-1 or PH-300-R-1.

The PH-300 can be operated with or without the air chamber. For easier coupling, drawbar guides are available, see page 62.

Capacities

72,000 lbs. (32,665 kg) Maximum Gross Trailer Weight
18,000 lbs. (8,165 kg) Maximum Vertical Load

Drawbar Eye Dimensions

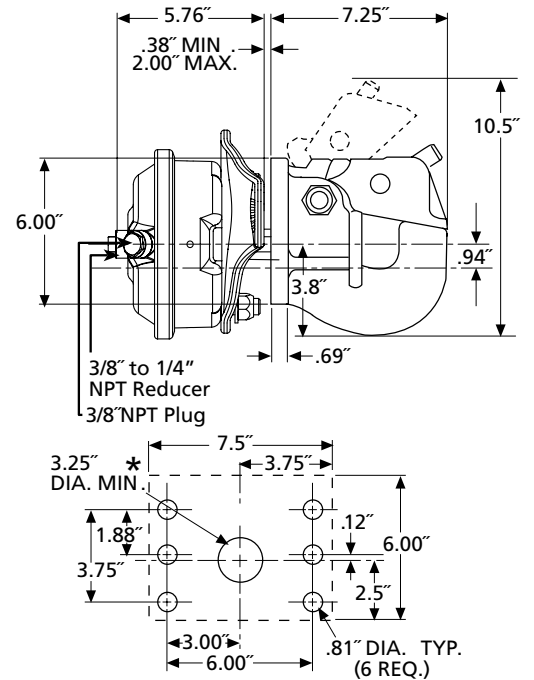
2.38" to 3" I.D. with 1.25" to 1.63" diameter section.

Additional Information

- For off-road* applications, reduce the above maximum capacities by 25% and use with a swivel-mount drawbar.
- Tested in accordance with SAE J847 (Type II).
- For additional specification detail, refer to document number XL-PH243. For PH-300-R, refer to XL-PH248.

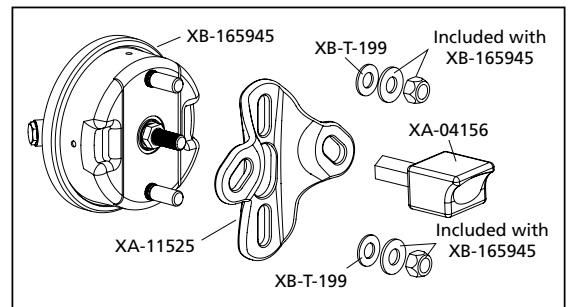
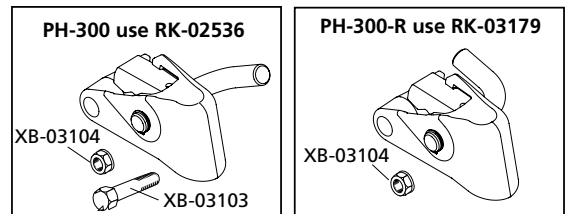
* See definition on page 71

Mounting Dimensions



* Center hole not required if used without air chamber.

Replacement Parts



XA-02608 Cylinder and Bracket Sub-Assembly

Pintle Hooks – Rigid Mount – Air Cushioned

U.S. and other patents apply

PH-310

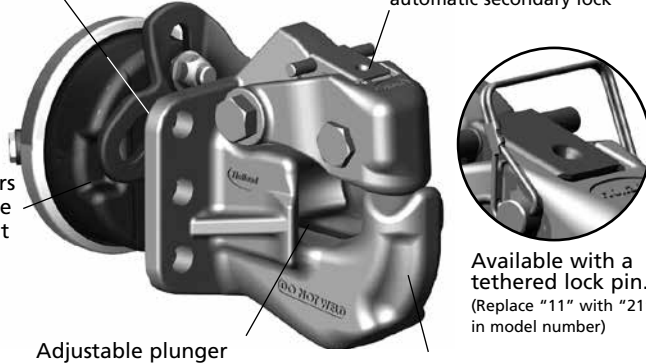
Application

A rigid mount pintle hook designed for trailers and semitrailers in doubles and triples operations. Used for off- and over-the-road applications. Air cushioned snubber is designed to minimize the space between the pintle hook and the drawbar eye on vehicles with air systems.

Plunger/snubber force is developed by the vehicle's air system to reduce wear and to provide shock absorption.

One-hand operation and automatic secondary lock

Air chambers are available for different mounting widths; see page 26.



Adjustable plunger

Cast steel alloy body is heat treated for increased strength, durability, and wear resistance.

Available with a tethered lock pin. (Replace "11" with "21" in model number)

Weight: 38 lbs. (17.7 kg)

PH-310RA11 – Complete assembly includes a pintle hook, plunger, air chamber, and mounting bracket.

PH-310RN11 – Pintle hook without an air chamber, bracket or plunger.

PH-310RM11 – Pintle hook with plunger only.

PH-310RF11 – Pintle hook with plunger and air chamber with 12" cut-to-length rod.

For additional model numbers, see page 30.

The PH-310 can be operated with or without the air chamber.

For easier coupling, drawbar guides are available, see page 62.

Capacities

100,000 lbs. (45,360 kg) Maximum Gross Trailer Weight
20,000 lbs. (9,070 kg) Maximum Vertical Load

Drawbar Eye Dimensions

2.38" to 3" I.D. with 1.25" to 1.63" diameter section.

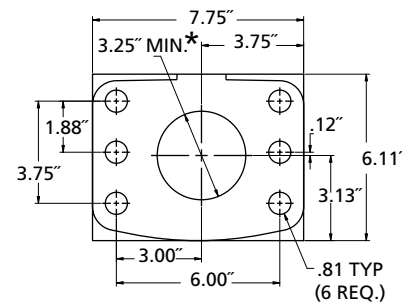
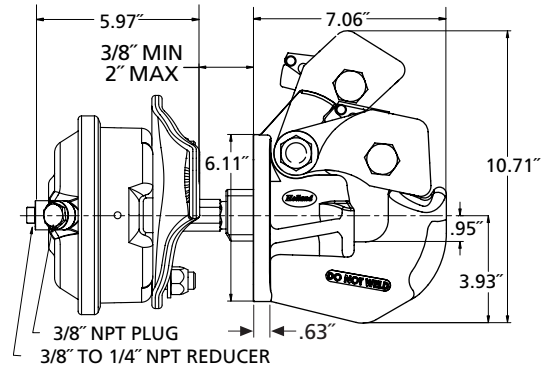
Additional Information

- For off-road* applications, reduce the above maximum capacities by 25% and use with a swivel-mount drawbar.
- Tested in accordance with SAE J847.
- For additional specification detail, refer to document number XL-PH341.
- Also available – PH310 Series with tethered lock pin. Replace "11" with "21" in model number.

* See definition on page 71

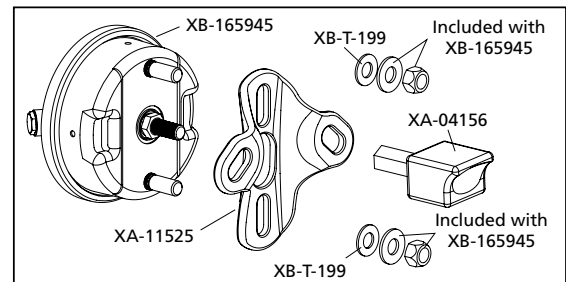
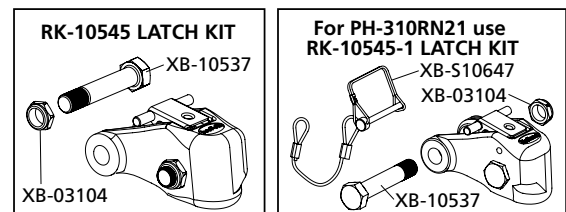
The HOLLAND PH-310 complies with NOM-035-SCT-2-2010 Safety Specifications and Test Methods.

Mounting Dimensions



* Center hole not required if used without air chamber.

Replacement Parts



XA-02608 Cylinder and Bracket Sub-Assembly

PH-400 and PH-400-H

Application

A rigid mount pintle hook designed for trailers and semitrailers in doubles and triples operations. Used for off- and over-the-road applications. Air cushioned snubber is designed to minimize the gap between the pintle hook and the drawbar eye on vehicles with air systems.

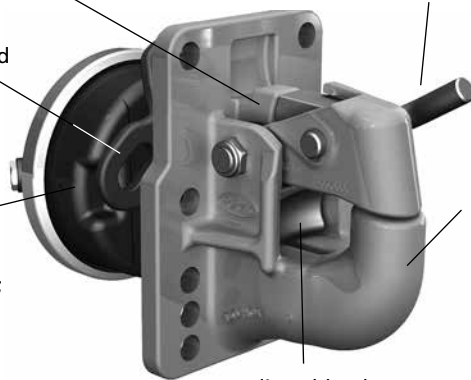
Automatic secondary lock for improved safety.

Plunger/snubber force is developed by the vehicle's air system to reduce wear and to provide shock absorption.

Air chambers are available for different mounting widths; see page 26.

Unique one-hand latch operation.

Cast alloy steel body is heat treated for increased strength, durability, and wear resistance.



Adjustable plunger

Weight: 48 lbs. (21.8 kg)

The complete assembly includes a pintle hook, plunger, air chamber, and mounting bracket. For pintle hooks without an air chamber, bracket, or plunger, order PH-400-1 or PH-400-1-H.

The PH-400 and PH-400-H can be operated with or without the air chamber. For easier coupling, drawbar guides are available, see page 62.

Capacities

100,000 lbs. (45,360 kg) Maximum Gross Trailer Weight
20,000 lbs. (9,070 kg) Maximum Vertical Load

Drawbar Eye Dimensions

2.38" to 3" I.D. with 1.25" to 1.63" diameter section.

Additional Information

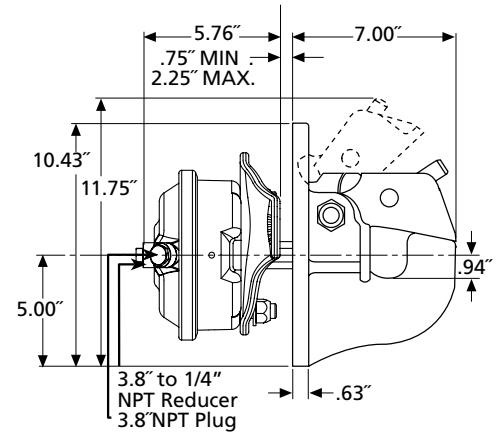
- For off-road* applications, reduce the above maximum capacities by 25% and use with a swivel-mount drawbar.
- Tested in accordance with SAE J847.
- For additional specification detail, refer to document number XL-PH244 or PH-247.

* See definition on page 71

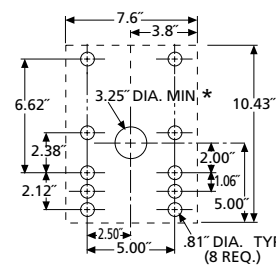
The HOLLAND PH-400 and PH-400-H complies with NOM-035-SCT-2-2010 Safety Specifications and Test Methods.

Mounting Dimensions

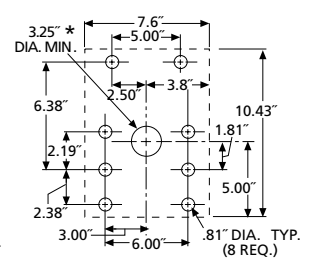
PH-400 and PH-400-H



PH-400

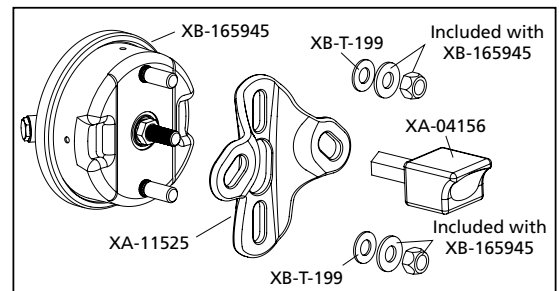
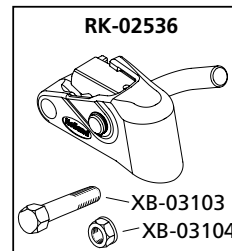


PH-400-H



* Center hole not required if used without air chamber.

Replacement Parts



XA-02608 Cylinder and Bracket Sub-Assembly

Pintle Hooks – Rigid Mount – Air Cushioned



SAF-HOLLAND Group

PH-405



Application

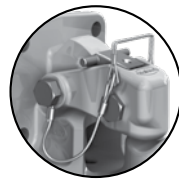
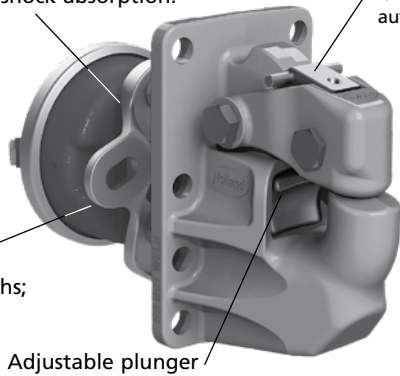
An austenitic manganese steel rigid mount pintle hook designed for trailers and semitrailers used in doubles and triples operations. Used for off- and over-the-road applications. Air cushioned snubber is designed to minimize the gap between the pintle hook and the drawbar eye on vehicles with air systems.

Plunger/snubber force is developed by the vehicle's air system to reduce wear and to provide shock absorption.



One-hand operation and automatic secondary lock

Air chambers are available for different mounting widths; see page 26.



Available with a tethered lock pin. (Replace "11" with "21" in model number)

Weight: 34 lbs. (15 kg)

PH-405RA11 – Complete assembly includes a pintle hook, plunger, air chamber, and mounting bracket.

PH-405RN11 – Pintle hook without an air chamber, bracket or plunger.

PH-405RM11 – Pintle hook with plunger only.

PH-405RF11 – Pintle hook with plunger and air chamber with 12" cut-to-length rod.

For additional model numbers, see page 30.

The PH-405 can be operated with or without the air chamber.

For easier coupling, drawbar guides are available, see page 62.

Capacities

100,000 lbs. (45,360 kg) Maximum Gross Trailer Weight

20,000 lbs. (9,070 kg) Maximum Vertical Load

Drawbar Eye Dimensions

3" I.D. with 1.625" to 2.375" diameter section.

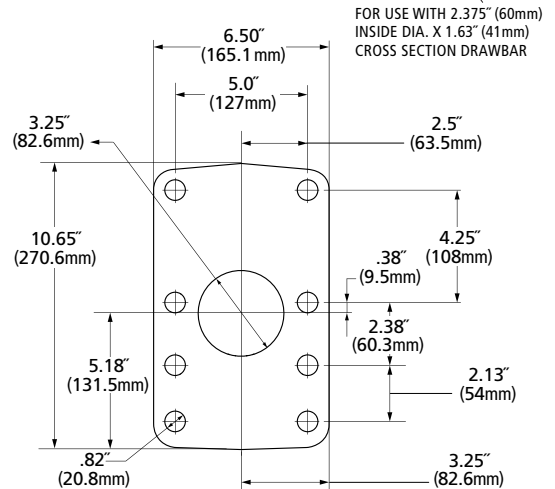
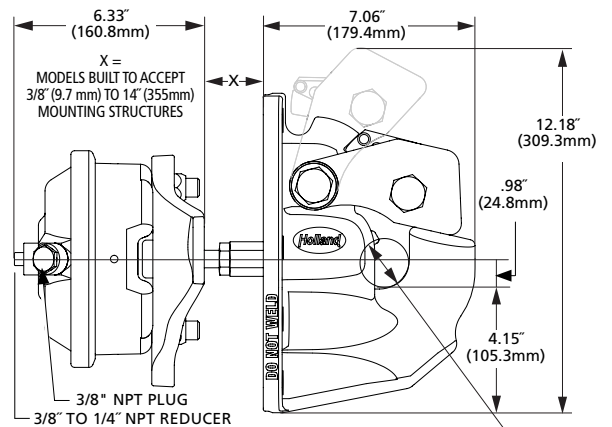
Additional Information

- For off-road* applications, reduce the above maximum capacities by 25% and use with a swivel-mount drawbar.
- Tested in accordance with SAE J847.
- For additional specification detail, refer to document number XL-PH20077SL.
- Also available – PH405 Series with tethered lock pin. Replace "11" with "21" in model number.

* See definition on page 71

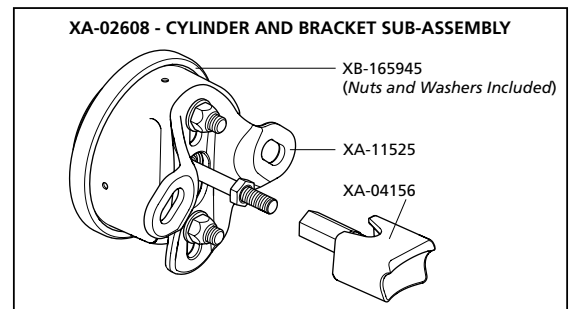
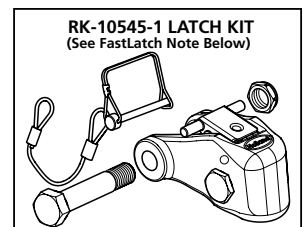
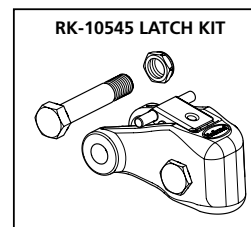
The HOLLAND PH-405 complies with NOM-035-SCT-2-2010 Safety Specifications and Test Methods.

Mounting Dimensions



NOTE: Rigid mount design with 8-bolt mounting pattern compatible with our popular PH-400 model, Premier 2400, 100-4 and 470 models.

Replacement Parts





AMAZING PERFORMANCE

TOGETHER THE ADZ & LSZ DELIVER STABLE & DURABLE PERFORMANCE



When you demand the best in roll stability and durability, go with NEWAY suspensions.

ADZ Benefits:

- Lower control assembly designed for superior roll stability and less maintenance
- Optimized design for high durability with weight savings
- 100% off-road approved

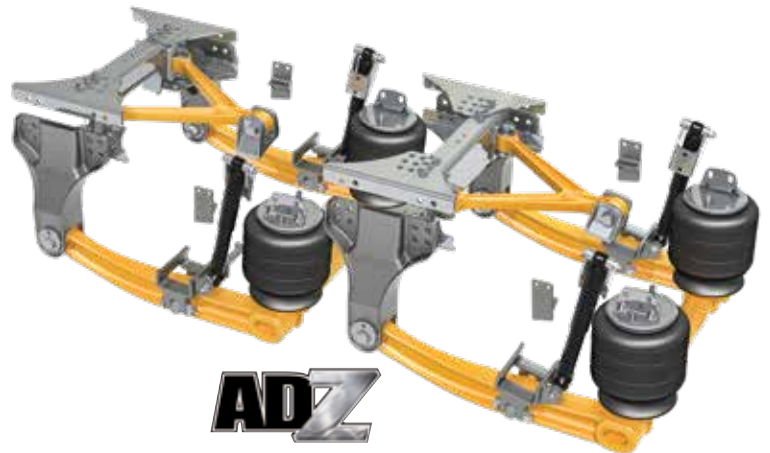
LSZ Benefits:

- Industry's smallest package optimizes chassis space
- Angled air springs enhance stability, ride performance and tire life
- Industry's quickest axle lift speed

When performance matters—and it matters—trust the suspensions designed with your bottom line in mind.



LEARN MORE



ADZ
Heavy-Duty Drive Axle Air Suspension



LSZ
Auxiliary Steerable Lift Axle Suspension

www.safholland.us 888-396-6501



Pintle Hooks – Rigid Mount – Air Cushioned

U.S. and other patents apply

PH-410

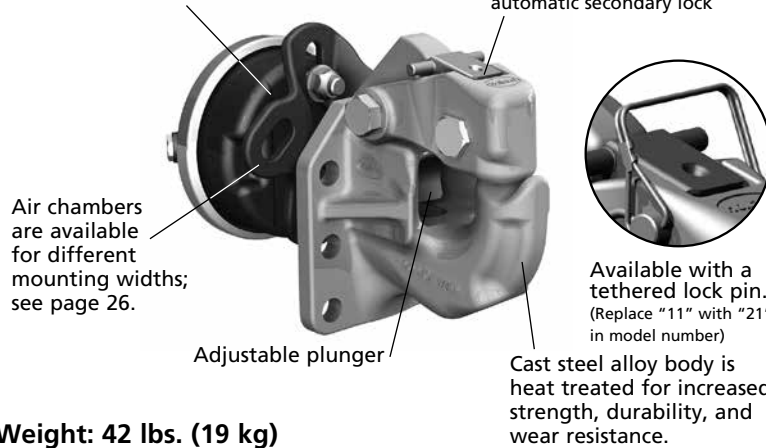
Application

A rigid mount pintle hook designed for trailers and semitrailers in doubles and triples operations. Used for off- and over-the-road applications. Air cushioned snubber is designed to minimize the gap between the pintle hook and the drawbar eye on vehicles with air systems.

Plunger/snubber force is developed by the vehicle's air system to reduce wear and to provide shock absorption.



One-hand operation and automatic secondary lock



Weight: 42 lbs. (19 kg)

PH-410RA11 – Complete assembly includes a pintle hook, plunger, air chamber, and mounting bracket.

PH-410RN11 – Pintle hook without an air chamber, bracket or plunger.

PH-410RM11 – Pintle hook with plunger only.

PH-410RF11 – Pintle hook with plunger and air chamber with 12" cut-to-length rod.

For additional model numbers, see page 30.

The PH-410 can be operated with or without the air chamber.

For easier coupling, drawbar guides are available, see page 62

Capacities

100,000 lbs. (45,360 kg) Maximum Gross Trailer Weight
20,000 lbs. (9,070 kg) Maximum Vertical Load

Drawbar Eye Dimensions

2.38" to 3" I.D. with 1.25" to 1.63" diameter section.

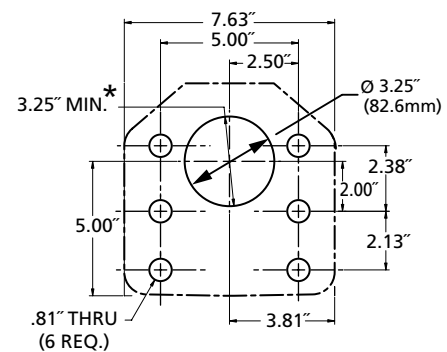
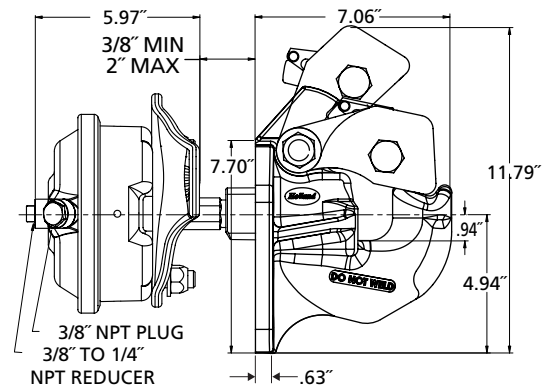
Additional Information

- For off-road* applications, reduce the above maximum capacities by 25% and use with a swivel-mount drawbar.
- Tested in accordance with SAE J847.
- For additional specification detail, refer to document number XL-PH342.
- Also available – PH410 Series with tethered lock pin. Replace "11" with "21" in model number.

* See definition on page 71

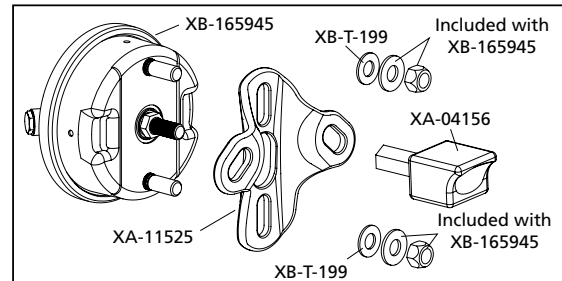
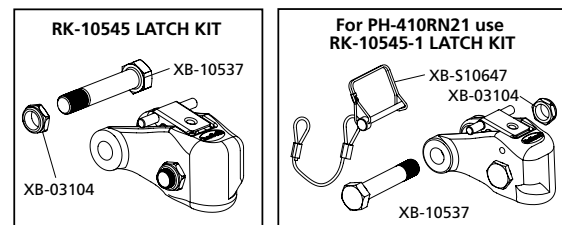
The HOLLAND PH-410 complies with NOM-035-SCT-2-2010 Safety Specifications and Test Methods.

Mounting Dimensions



* Center hole not required if used without air chamber.

Replacement Parts



XA-02608 Cylinder and Bracket Sub-Assembly



SAF-HOLLAND Group

Pintle Hooks – Rigid Mount – Air Cushioned

PH-419

DISCONTINUED
Service parts only are available.

U.S. and other patents apply

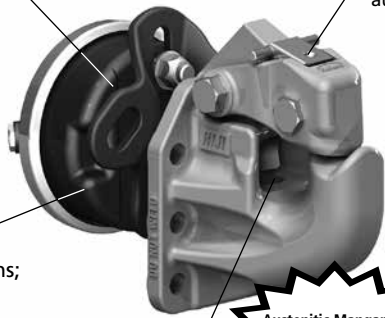
Application

A rigid mount pintle hook designed for trailers and semitrailers used in doubles and triples operations. Used for off- and over-the-road applications. Air cushioned snubber is designed to minimize the gap between the pintle hook and the drawbar eye on vehicles with air systems.

Plunger/snubber force is developed by the vehicle's air system to reduce wear and to provide shock absorption.



One-hand operation and automatic secondary lock



Air chambers are available for different mounting widths; see page 26.

Adjustable plunger

Austenitic Manganese steel alloy body for enhanced wear resistance.

Available with a tethered lock pin. (Replace "11" with "21" in model number)

Weight: 42 lbs. (19 kg)

PH-419RA11 – Complete assembly includes a pintle hook, plunger, air chamber, and mounting bracket.

PH-419RN11 – Pintle hook without an air chamber, bracket or plunger.

PH-419RM11 – Pintle hook with plunger only.

PH-419RF11 – Pintle hook with plunger and air chamber with 12" cut-to-length rod.

The PH-419 can be operated with or without the air chamber. For easier coupling, drawbar guides are available, see page 62.

Capacities

100,000 lbs. (45,360 kg) Maximum Gross Trailer Weight
20,000 lbs. (9,070 kg) Maximum Vertical Load

Drawbar Eye Dimensions

3" I.D. with 1.25" to 1.63" diameter section.

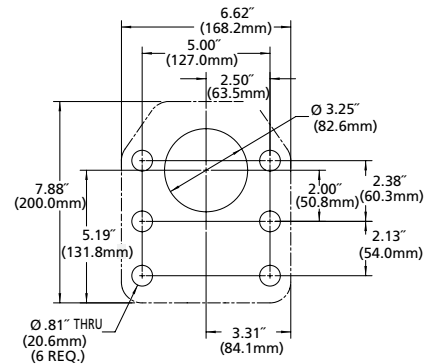
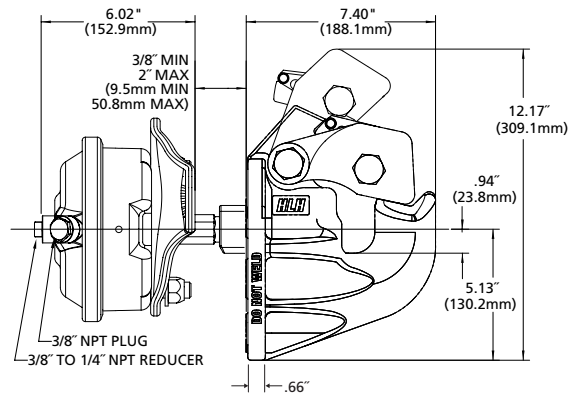
Additional Information

- For off-road* applications, reduce the above maximum capacities by 25% and use with a swivel-mount drawbar.
- Tested in accordance with SAE J847.
- For additional specification detail, refer to document number XL-PH10409.

* See definition on page 71

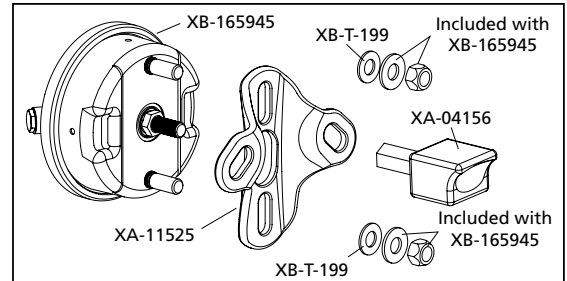
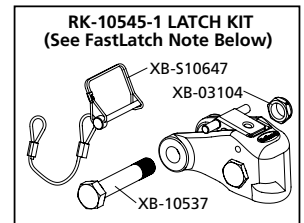
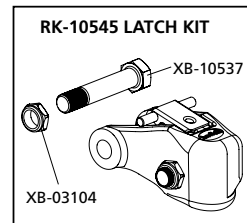
The HOLLAND PH-419 complies with NOM-035-SCT-2-2010 Safety Specifications and Test Methods.

Mounting Dimensions



* Center hole not required if used without air chamber.

Replacement Parts



XA-02608 Cylinder and Bracket Sub-Assembly

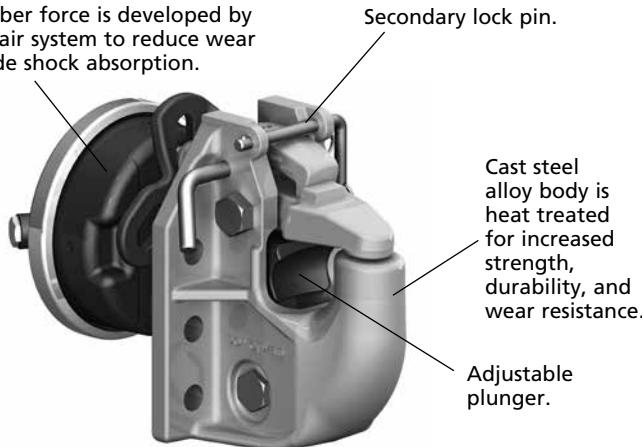
Pintle Hooks – Rigid Mount – Air Cushioned

PH-550

Application

A rigid mount pintle hook designed for trailers and semitrailers in doubles and triples operations. Used for off- and over-the-road applications. Air cushioned snubber is designed to minimize the gap between the pintle hook and the drawbar eye on vehicles with air systems.

Plunger/snubber force is developed by the vehicle's air system to reduce wear and to provide shock absorption.



Weight: 47 lbs. (21.3 kg)

The complete assembly includes a pintle hook, bullet, mounting bracket, and air chamber. For pintle hook and plunger only, order PH-550-1. The PH-550 must be operated with an air chamber. For easier coupling, drawbar guides are available; see page 62.

Capacities

100,000 lbs. (45,360 kg) Maximum Gross Trailer Weight
25,000 lbs. (11,340 kg) Maximum Vertical Load

Drawbar Eye Dimensions

2.38" to 3" I.D. with 1.63" to 1.75" diameter section.

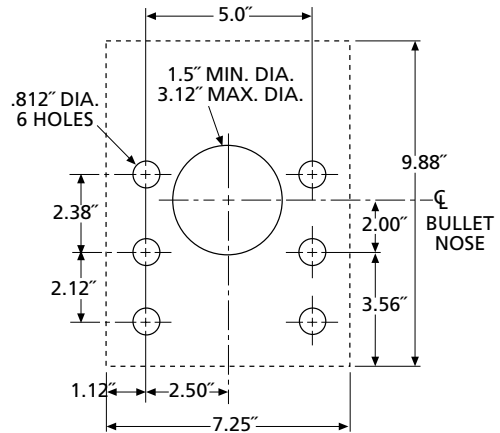
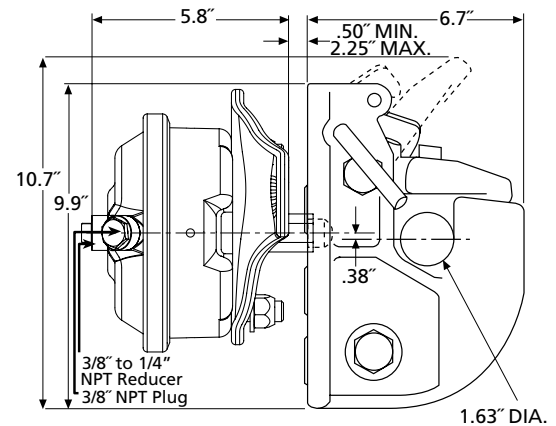
Additional Information

- For off-road* applications, reduce the above maximum capacities by 25% and use with a swivel-mount drawbar.
- Tested in accordance with SAE J847.
- For additional specification detail, refer to document number XL-PH261.

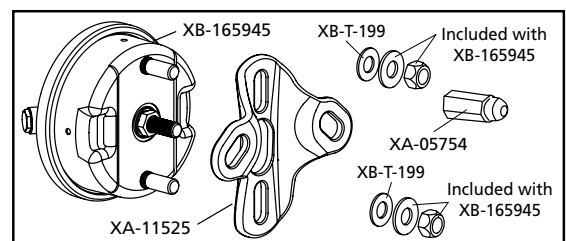
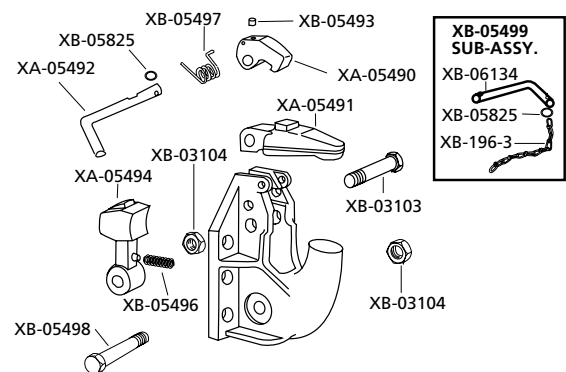
* See definition on page 71

The HOLLAND PH-550 complies with NOM-035-SCT-2-2010 Safety Specifications and Test Methods.

Mounting Dimensions



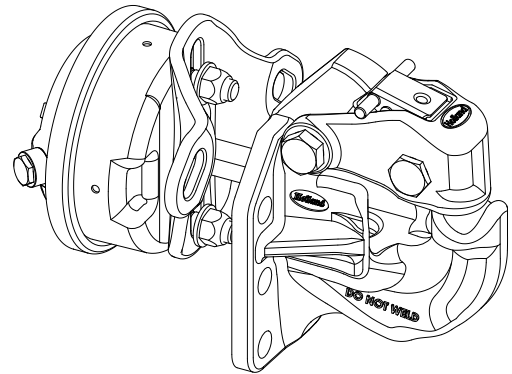
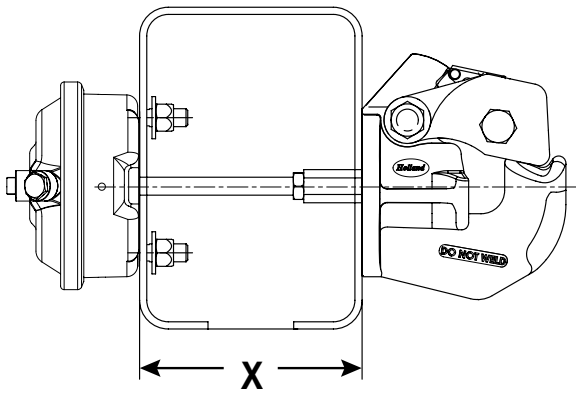
Replacement Parts



XA-09862 Cylinder and Bracket Sub-Assembly

Air Chamber Assemblies and Mounting Kits

U.S. and other patents apply

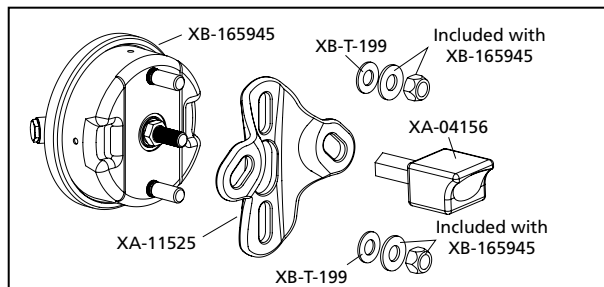


| | SELECT "X" DIMENSION FOR MOUNTING | AIR CHAMBER ROD LENGTH | AIR CHAMBER/PLUNGER ASSEMBLY P/N WHEN ORDERED SEPARATELY | PINTLE HOOK PART NUMBERS ***** | | | | | | | | |
|--|-----------------------------------|------------------------|--|--------------------------------|----------|------------|----------|----------|------------|----------|----------|----------|
| PINTLE HOOK ONLY | | | | PH-210RN | PH-300-1 | PH-300-R-1 | PH-310RN | PH-400-1 | PH-400-1-H | PH-410RN | PH-409RN | |
| PINTLE HOOK WITH PLUNGER ONLY | | | | PH-210RM | | | PH-310RM | | | PH-410RM | PH-409RM | PH-550-1 |
| PINTLE HOOK WITH COMPLETE AIR CHAMBER ASSEMBLY | .38" - 2.50" | 1.8" | XA-02608* | PH-210RA | | | PH-310RA | PH-400 | PH-400-H | PH-410RA | PH-409RA | |
| | 2.0" - 12.0" | 12.0" | XA-10198*** | PH-210RF | | | PH-310RF | | | PH-410RF | PH-409RF | |
| | .38" - 2.25" | 1.8" | XA-02608* | | PH-300 | PH-300-R | | | | | | |
| | .50" - 2.25" | | XA-09862** | | | | | | | | | PH-550** |

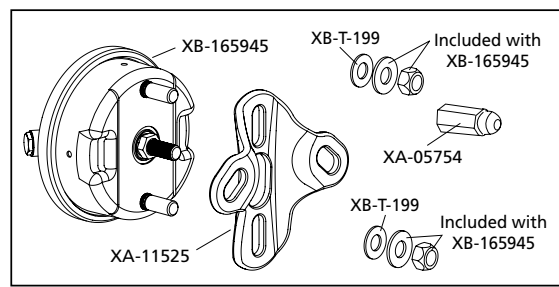
WHAT'S INCLUDED:

- * Includes plunger, mounting bracket, and air chamber.
- ** For PH-550, includes bullet, mounting bracket, and air chamber (plunger is factory installed to the pintle hook).
- *** Includes plunger and air chamber with cut-to-length rod.

XA-02608



XA-09862



XA-10198

